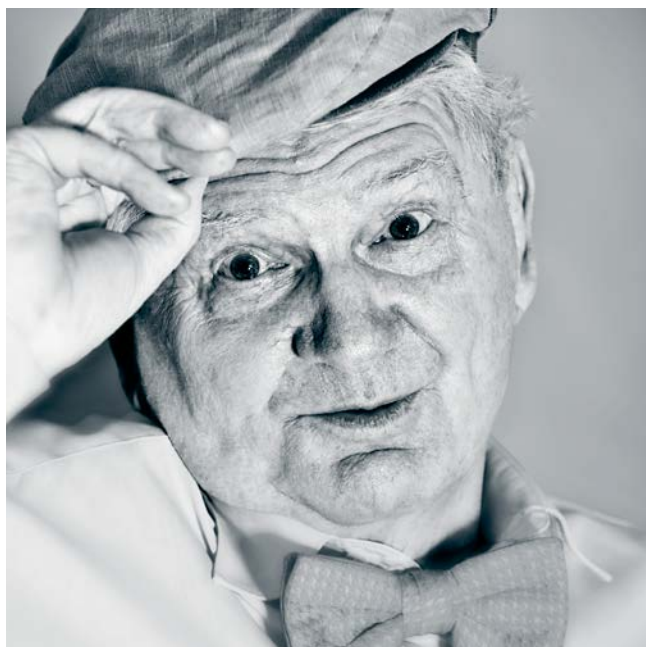


■ ■ wissner-
■ ■ bosserhoff

Functional elegance in nursing care



Mattresses

for nursing home and hospital beds





Preface



Priv.-Doz. Dr. rer. cur. Jan Kottner
Charité - University Medical Department in Berlin
Clinical Research Center for Hair and Skin Science

The demographic change in Europe confronts society with new challenges. Increasing life expectancy leads to changes in the requirements of living space. Despite the progress made in medicine, physical impairments increase in old age. Daily life gets more burdensome. Healthy persons spend about a third of the day in bed, those in need of care are often so limited in their mobility that they are forced to spend most of their time lying down.

Thus, correct positioning of residents and patients becomes more and more a focus nowadays. It is a proven fact that patients confined to bed have a high risk of bedsores, as they are unable to compensate with movement the pressure created when sitting or lying in bed for longer periods.

A multitude of factors needs to be considered when purchasing a specialized bed system. For persons at risk of bedsores, special active or reactive mattresses should be chosen. Mattress properties and skin contact are crucial for the bed climate. A good mattress has to absorb humidity and reduce heat accumulation. The degree of air permeability of a mattress among other factors depends on the existence of aeration channels.

In this respect, it seems appropriate to conclude that careful selection of the suitable mattress cannot be considered as the purchase of a negligible bed accessory, but is a crucial factor for the health and comfort of a nursing institution's residents.

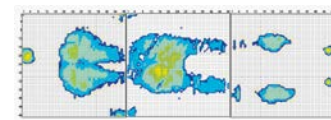
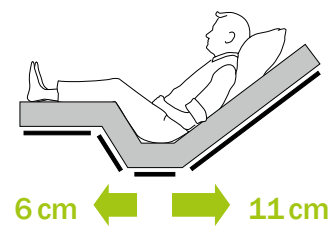
Patient surfaces for bedsores prevention

Lying and sitting in the same position for longer periods of time as well as high pressure loads that are accompanied by strong shearing forces, lead to pressure ulcers. The lack of movement of patients can lead to painful bedsores.

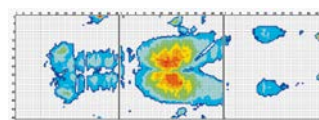
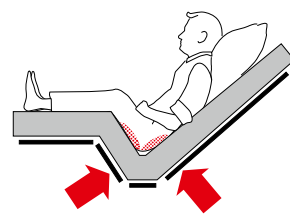
Beds by wissner-bosserhoff offer two systems, which create optimal conditions for the patient's comfort even during bed adjustments and which can reduce negative effects of positioning. BiNetic patient surface with double retraction for nursing home beds and Ergoframe® patient surface for hospital beds.

BiNetic patient surface

wissner-bosserhoff nursing home beds have a double retraction for the back and leg rest. This double retraction reduces friction and shearing forces in the pelvic area and therefore considerably reduces the risk of bedsores.



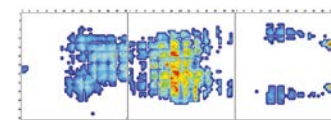
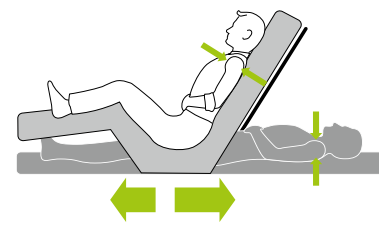
BiNetic patient surface with double retraction



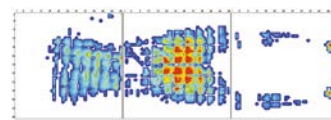
standard patient surface

Ergoframe® patient surface

The Ergoframe® principle of wissner-bosserhoff hospital beds raises the rotation points of the backrest and thigh rest above the actual patient surface. The result is a stable mattress position and an enlarged sitting area. The body retains a constant position on the mattress, whereby any friction and shearing forces between the patient's skin and the mattress cover are reduced to a minimum. At the same time, the patient's head is supported during the entire adjustment process.



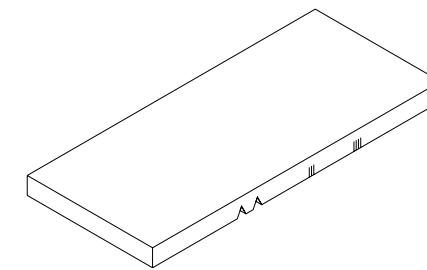
Ergoframe® patient surface



standard patient surface

Universal mattresses

The universal mattresses by wissner-bosserhoff are especially suitable for relatively mobile residents/patients who do not have to stay in bed permanently.



Area of use:

Universal mattress for nursing care for the elderly and acute patients, no prevention features, max. patient weight 130 kg (lying down)*



Universal mattress | Mod. No. 50-0084

Polyether foam RG 40, lower side with special incisions for bending the knees and for the backrest in accordance with DBfK (German nurses association) recommendation.



Terry cloth stretch cover
Zipper on two sides, color: beige



Cover Aqua
moisture-repellent
with PU coating (155 g/m²),
Color: white

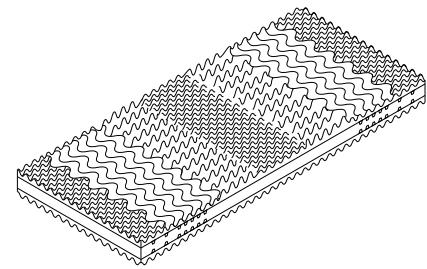


Aqua plus mint-green
moisture-repellent with
PU/PES coating (190 g/m²), bi-elastic.

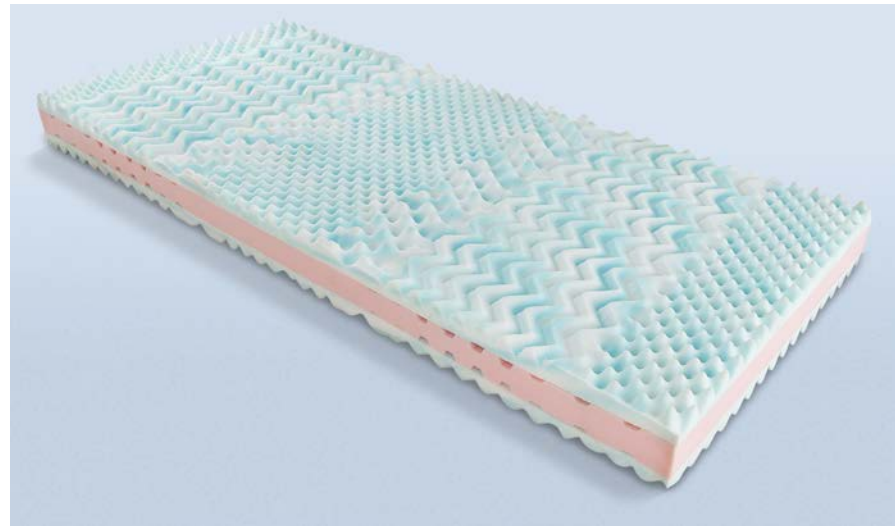
Comfort and prophylaxis mattresses

The parts of our body vary considerably in weight and shape. The MicroMatt 7 with its 7 zones accommodates this fact. With its surface with massage points and a wave profile, it stimulates the skin in a pleasant way and a positive feeling while lying down is created.

MicroMatt 7



Area of use:
Comfort and prevention,
nursing care for the elderly and acute patients,
max. patient weight 100 kg (lying down)*



7-zone mattress | Mod. No. 50-0565
Upper and lower layer made of 3.5 cm cold foam each, VW 55; middle layer made of 7 cm cold foam, VW 40; with integrated ventilation channels
Surface with massage points and wave profile.



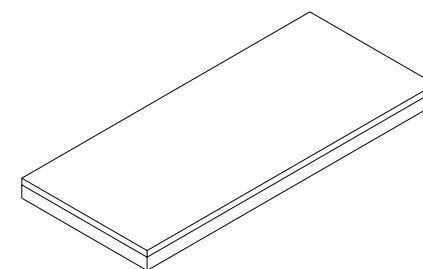
Cover Aqua
moisture-repellent
with PU coating (155 g/m²),
Color: white



Reversible Jersey cover, One half Aqua Plus and the other Jersey, i.e. elastic knitwear consisting of hygienic tubular fabric, light blue, especially breathable and resistant to boiling (Jersey is not moisture-repellent)

Especially persons with a high risk of bedsores by long confinement to bed benefit from reliable prophylaxis. This is why the wissner-bosserhoff prevention mattresses provide optimal pressure distribution for all the parts of the body in contact with the mattress, considerably reducing the risk of bedsores.

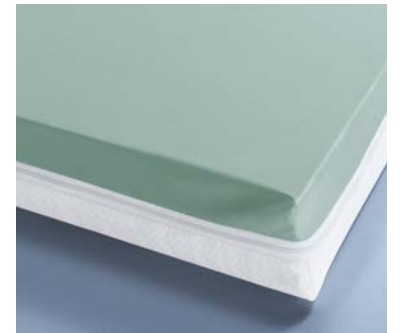
ViskoMatt Comfort



Area of use:
Comfort and prevention,
nursing care for the elderly and acute patients,
max. patient weight 120 kg (lying down)*

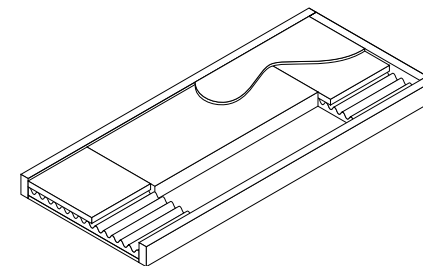


2-layer mattress | Mod. No. 50-0317
top layer with 4 cm viscoelastic thermo foam, VW 50,
bottom layer with 10 cm cold foam, VW 40.



Reversible cover Cambio
One half Aqua Plus and one half medical double cloth, i.e. made of triple-layered material, white, highly breathable and resistant to boiling (this half is not moisture-repellent), zipper on four sides

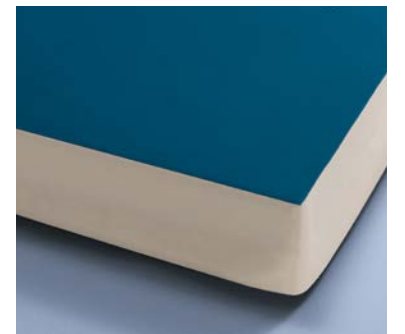
ProphyMatt



Area of use:
Comfort and prevention,
nursing care for acute patients, intensive care,
nursing care for the elderly,
max. patient weight 120 kg (lying down)*



Professional hybrid mattress | Mod. No. 50-0126
6-layer hybrid mattress with reinforced edges and a upper layer made of viscoelastic foam, which helps to ensure optimal pressure distribution. The head and foot section consists of a mixture of cold foam and viscose foam with a different density, hardness and profile.



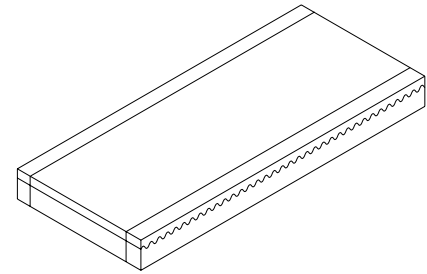
Lintex cover
Dark blue, moisture-repellent
with PU/PES coating (185 g/m²)
bi-elastic (top side)
with carrying straps.

Comfort and prophylaxis mattresses

ViskoMatt 3 is a high-quality viscoelastic mattress that offers an optimal pressure relief of 35 % on average. The 10 cm wide reinforced edges on both long sides effectively support fall prevention and mobilization. The high-quality foams ensure high stability and a long durability. In addition to this, local pressure points are avoided.

The corresponding cover in the color grey-aluminum is bi-elastic and has an antimicrobial fitting due to silver protection. By standard, it is equipped with a concealed L zipper. Optionally, the mattress is also available with an evacuation cover, welded stitches and a zipper on the bottom.

ViskoMatt 3



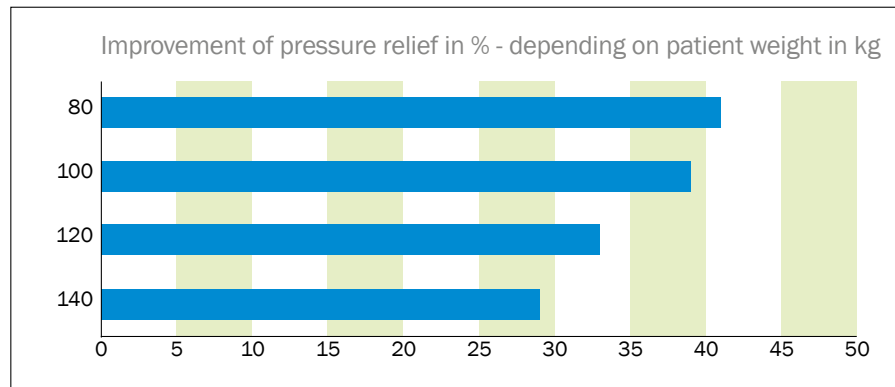
Area of use:
Comfort and prevention,
nursing care for acute patients, intensive care,
nursing care for the elderly,
max. patient weight 130 kg (lying down)*



Viscoelastic top-mattress | Mod.-No. 50-0577
Upper layer made of 5 cm viscoelastic polyurethane foam for optimal pressure distribution, RG 85
Lower layer made of 9 cm polyether cold foam, VW 55
Reinforced edges made of polyether foam, VW 40.



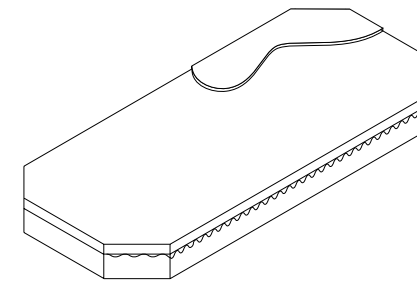
Cover grey-aluminum
With moisture-repellent PU coating
(230 g/m²), bi-elastic, antimicrobial due
to silver protection,
with concealed L zipper.



Improvement of average pressure relief in % by using ViskoMatt 3 with a patient weight between 80 and 140 kg, compared to standard foam in accordance with DIN 13014; audited by Berlin Cert.

ErgoMatt Pro is a pressure relieving, viscoelastic mattress with beveled edges, which was developed specifically for the tub-shaped ErgoFrame® patient surface of wissner-bosserhoff hospital beds.* The mattress core consists of a block of thick foam which is covered by a layer of visco. The ErgoMatt offers optimal patient comfort, and in combination with an ErgoFrame®, it can reduce the pressure in the pelvic area by up to 25 %, compared to a standard bed. The Lintex cover for the mattress is bi-elastic and has welded seams.

ErgoMatt Pro



Area of use:
Comfort and prevention,
Nursing care for acute patients, intensive care,
max. patient weight: 130 kg (lying down)*



Viscoelastic special mattress for
ErgoFrame® | Mod.-No. 50-0314
Upper layer made of 5 cm viscoelastic polyurethane
foam for optimal pressure distribution, VW 80
Lower layer made of 9 cm PU foam, VW 50.

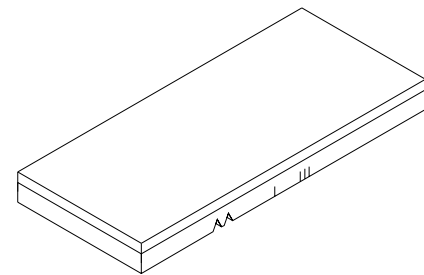
Lintex cover
Moisture-repellent with PU/PES coating
(185 g/m²), bi-elastic, antistatic,
complies with the flame resistance
standard BS 7175, color black.

* Models eleganza 3, eleganza 3XC, multicare, multicare LE

Bariatric mattresses

With wissner-bosserhoff bariatric mattresses, even extremely heavy persons can count on a high level of bedding comfort. They are available with a thickness of 14 cm or even 18 cm.

HeavyMatt 160



Area of use:
Bariatric residents/patients, care of the elderly, adipositas, max. resident weight 160 kg (lying down)*.

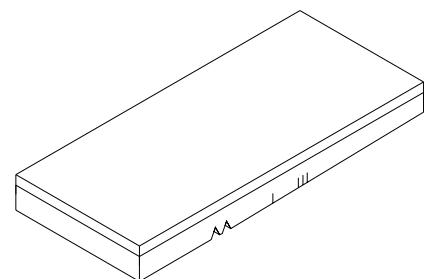


14 cm thick | Mod. No. 50-0315
Upper layer made of 6 cm polyether foam, VW 40.
Lower layer made of 8 cm special compression-molding foam, VW 50, with contour incisions for adaptation of the patient surface, high supporting force to support mobilization.



Cover Aqua
Moisture-repellent with PU coating (155 g/m²), Color: white

HeavyMatt 230



Area of use:
Bariatric residents/patients, care of the elderly, adipositas, max. resident weight 230 kg (lying down)*.



18 cm thick | Mod. No. 50-0355
Upper layer made of 6 cm cold foam, VW 55.
Lower layer made of 12 cm special compression-molding foam, VW 60, with contour incisions for adaption of the patient surface.



Aqua plus mint-green
moisture-repellent with PU/PES coating (190 g/m²), bi-elastic.

Evacuation cover

For quick and easy evacuation in an emergency

In an emergency, the residents of a nursing home or hospital have to be evacuated quickly. This is especially important for immobile persons and those confined to bed. With the evacuation cover, wissner-bosserhoff has the perfect solution. Residents can be transported quickly and safely, without the need to get them out of the bed first. The stable carrying straps allow for quick and safe evacuation.

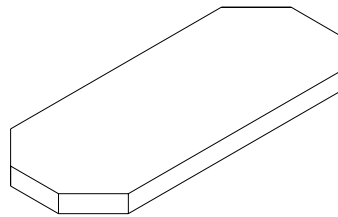


Evacuation cover | Mod. No. 50-0552
With 7 carrying straps, 3 belts for fixation of the resident, suitable for up to 250 kg resident weight, moisture-repellent, with PU coating, bi-elastic, high-tensile and low in friction, surface weight 230 g/m² on the upper side, 275 g/m² on the lower side, with concealed two-way L zipper between bottom and sides, antimicrobial with silver ions, without nanoparticles.

Mattresses for stretcher sprint

The unique mattress system for the stretcher sprint comes in three different variants. The visco-elastic surface of the sprint comfort mattress ensures comfortable lying over longer periods. The sprint plus mattress simplifies patient transfer since it contains extendable pads that close the gap between stretcher and operating table, hospital bed or X-ray table.

sprint

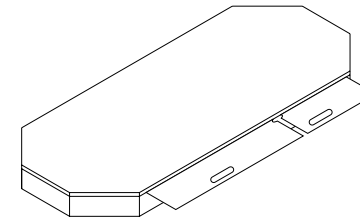


Area of use:
Out-patient department/Acute care.

Polyurethane cold foam mattress (CMHR)
Mod.-No. 20-0383
Foam insert made of 6cm HR cold foam, RG 43.

Lintex cover
Moisture-repellent with PU/PES coating (185 g/m²), bi-elastic, antistatic, complies with the flame resistance standard BS 7175, color black.

sprint plus

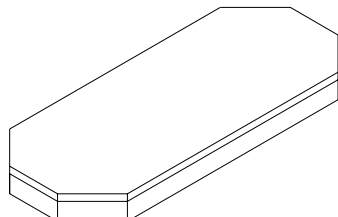


Area of use:
Out-patient department/Acute care.

Polyurethane cold foam mattress
Mod.-No. 20-0385
Foam insert made of 6cm HR cold foam, RG 43 with patient transfer pads that can be extended sideways.

Lintex cover
Moisture-repellent with PU/PES coating (185 g/m²), bi-elastic, antistatic, complies with the flame resistance standard BS 7175, color black.

sprint comfort



Area of use:
Out-patient department/Acute care.

2-layer mattress | Mod. No. 20-0384
Top layer of 2 cm visco-elastic thermal foam, lower layer of 8 cm polyurethane cold foam (CMHR) RG 40.

Lintex cover
Moisture-repellent with PU/PES coating (185 g/m²), bi-elastic, antistatic, complies with the flame resistance standard BS 7175, color black.

Active mattress systems

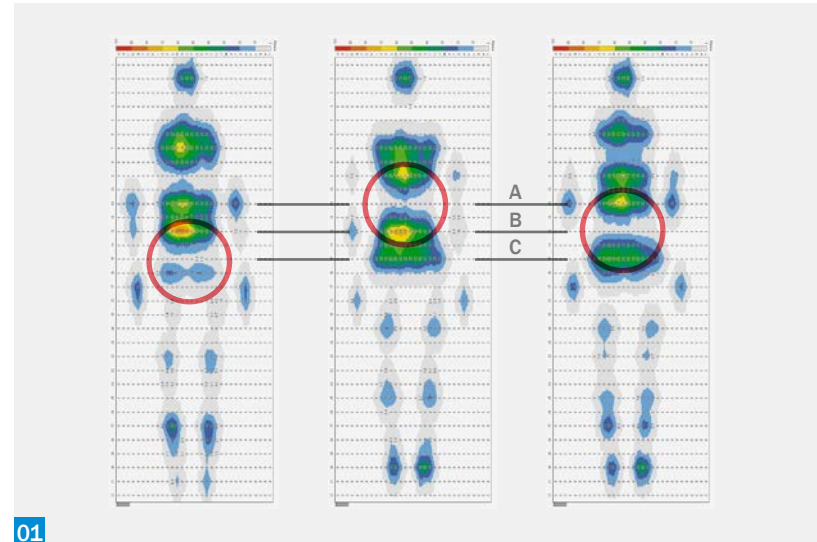
The active mattress systems of wissner-bosserhoff offer a clinically proven bedsore prevention and therapy. Different mechanisms are employed. The product portfolio ranges from effective alternating pressure mattresses to constant low pressure systems with micro climate management.

01 3 Cell technology [a, b, c]

The patient's weight is distributed to two thirds of the surface. This makes the mattress soft and comfortable, without impairing the clinical outcome. Moreover, since only one third of the surface is active at a time (inflating/deflating), it provides optimum stable support to the body enabling maximum pressure relief to be achieved.

7.5 Minute cycle

Exton-Smith and Sherwin studied the number of movements in healthy subjects while sleeping in order to find out what is the natural body behavior¹. They found out that none of the patients who moved more than 56 times during the night developed tissue damage. This corresponds to one movement each 7.5 minutes.



01

02 Constant low pressure

The mattress automatically maintains the selected pressure, regardless of changes in weight distribution or position. Thus, a constantly good level of pressure redistribution is achieved.

The use of active pressure redistribution products, such as constant low pressure, is recommended for patients with a higher risk of bedsores, where frequent manual repositioning is not possible. The efficiency of the products is scientifically proven by carefully assembled and implemented clinical studies².



02

¹ Exton-Smith, AN, Sherwin RW. The prevention of pressure ulcers: significance of spontaneous bodily movements. Lancet. 1961; 2: 1124-1126.

² EPUAP and NPUAP Prevention and treatment of pressure ulcers: Quick reference guide 2009.



virtuoso® Series 2

- High-Performance in bedsore prevention and -therapy.
- Meets the most demanding nursing needs of highest risk patients.
- For example, offers alternating pressure therapy, constant low pressure with automatic pressure adjustment (4 working modes in total).
- Practice-oriented options for intensive care patients are available.
- An optional alternating pressure seat cushion, which can be used intuitively, supports 24 hour care.



precioso® Series 2

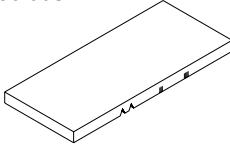
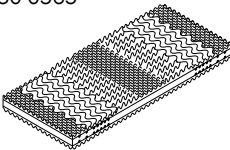
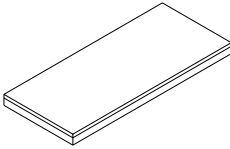
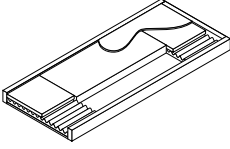
- Economical bedsore prevention and therapy.
- Effective and proven pressure ulcer prevention and therapy for all patients with risk of bedsores in everyday general nursing environments.
- For example, offers alternating pressure therapy or constant low pressure with automatic pressure adjustment (4 working modes in total).
- An optional alternating pressure seat cushion, which can be used intuitively, supports 24 hour care.

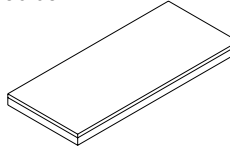
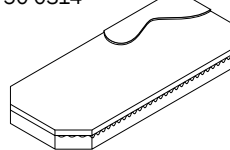
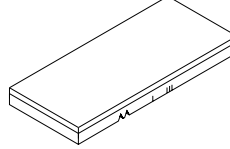
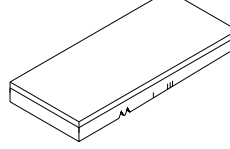


sybioso 100/200

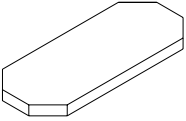
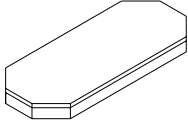
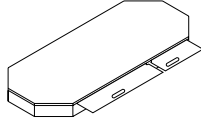
- Bedsore prevention and therapy thanks to constant low pressure or low air loss technology.
- Two integrated systems for the intensive care beds multicare or multicare LE.
- Intuitive handling via the bed.
- Offer constant low pressure with automatic pressure adjustment and micro climate management (sybioso 200).
- A sleeping mode increases the patient's comfort during the night (40% noisereduction) by maintaining a comparable air flow as market standard low air loss systems in normal mode (sybioso 200).
- Electrical CPR for a fast and simplified reaction in an emergency.

Product range overview/accessories

| Mattresses | Field | Mattress dimensions | Load | Cover |
|--|---|---|--|---|
| Universal mattress 50-0084  | No prevention Nursing care for the elderly and acute patients | 200 x 87 x 12 cm 208 x 87 x 12 cm 220 x 87 x 12 cm 170 x 80 x 12 cm 200 x 100 x 12 cm | Max. resident weight: 130 kg (lying down)* | Terry cloth stretch Aqua Aqua plus mint-green Cambio Reversible Jersey cover Liquid Wonder Silverline |
| MicroMatt 7 50-0565  | Comfort and prevention Nursing care for the elderly and acute patients | 200 x 87 x 14 cm 208 x 87 x 14 cm 220 x 87 x 14 cm 200 x 100 x 14 cm | Max. resident weight: 100 kg (lying down)* | Terry cloth stretch Aqua Aqua plus mint-green Cambio Reversible Jersey cover Liquid Wonder Silverline |
| ViskoMatt Comfort 50-0317  | Comfort and prevention Nursing care for the elderly and acute patients | 200 x 87 x 14 cm 208 x 87 x 14 cm 220 x 87 x 14 cm 200 x 100 x 14 cm | Max. resident weight: 120 kg (lying down)* | Terry cloth stretch Aqua Aqua plus mint-green Cambio Reversible Jersey cover Liquid Wonder Silverline |
| PropyMatt 50-0126  | Comfort and prevention Nursing care for acute patients, intensive care, nursing care for the elderly | 200 x 86 x 14 cm 208 x 86 x 14 cm | Max. resident weight: 120 kg (lying down)* | Lintex |

| Mattresses | Field | Mattress dimensions | Load | Cover |
|---|---|---|--|---|
| ViskoMatt 3 50-0577  | Comfort and prevention Nursing care for acute patients, intensive care, nursing care for the elderly | 200 x 87 x 14 cm 200 x 90 x 14 cm 200 x 100 x 14 cm 220 x 87 x 14 cm 220 x 90 x 14 cm | Max. resident weight: 130 kg (lying down)* | Grey-aluminum |
| ErgoMatt Pro 50-0314  | Comfort and prevention Nursing care for acute patients, intensive care | 208 x 94 x 14 cm | Max. resident weight: 120 kg (lying down)* | Lintex |
| HeavyMatt 160 50-0315  | Care of the elderly, adipositas | 200 x 87 x 14 cm 208 x 87 x 14 cm 220 x 87 x 14 cm 170 x 80 x 14 cm 200 x 100 x 14 cm | Max. resident weight: 160 kg (lying down)* | Terry cloth stretch Aqua Aqua plus mint-green Cambio Reversible Jersey cover Liquid Wonder Silverline |
| HeavyMatt 230 50-0355  | Care of the elderly, adipositas | 200 x 100 x 18 cm | Max. resident weight: 230 kg (lying down)* | Aqua plus mint-green |

Product range overview/accessories

| Mattresses | Field | Mattress dimensions | Cover |
|--|-----------------------------------|---------------------|-------------------|
| sprint 20-0383  | Out-patient department/Acute care | 192 x 61 x 6 cm | Lintex antistatic |
| sprint comfort 20-0384  | Out-patient department/Acute care | 192 x 61 x 10 cm | Lintex antistatic |
| sprint plus 20-0385  | Out-patient department/Acute care | 192 x 61 x 6 cm | Lintex antistatic |

Mattress covers

| Cover | Aqua | Aqua Plus | Cambio | Reversible Jersey cover | Lintex | Stretch terry | Liquid Wonder | Evacuation cover | grey-aluminum |
|----------------------------|---------------------|---------------------|------------------------------|------------------------------|------------------------------|---------------------|---------------------|---|----------------------|
| Mod No.: | 50-0102 | 50-0096 | 50-0103 | 50-0140 | 50-0139 | 50-0101 | 50-0176 | 50-0552 | 50-0582 |
| Color | white | mint-green | mint-green/white | light blue/white | dark blue | beige | beige | grey-aluminum | grey-aluminum |
| Moisture resistance | yes | yes | on one half | on one half | yes | no | yes | yes | yes |
| Mass per unit area | 155g/m ² | 190g/m ² | Top side 190g/m ² | Top side 155g/m ² | Top side 185g/m ² | 190g/m ² | 190g/m ² | Top side 230g/m ² bottom side 275g/m ² | 230 g/m ² |
| Elasticity | uni-elastic | bi-elastic | MR** side bi-elastic | MR** side uni-elastic | Top side bi-elastic | elastic | elastic | bi-elastic | bi-elastic |
| Washable at | 95° C | 95° C | 95° C | 95° C | 70° C | 95° C | 60° C | 60° C | 95° C |
| Zipper | 2 sides | 2 sides | 4 sides | 4 sides | 4 sides | 2 sides | 2 sides | 2 sides | 2 sides |

General cover properties Mattress covers from wissner-bosserhoff convince with their one or double-sided resistance to urine and disinfectants, breathability and steam permeability. All covers are environmentally compatible in accordance with the German eco-textile standard "Öko-Tex".

Cleaning The mattress covers are washable up to 70° and/or 90° C and can be tumble dried. Besides allowing use of disinfectants, all moisture protection covers have a high resistance to bacteria, viruses, fungi and mites.



Suitable for tumble dryers



Washability



Functional elegance in nursing care

wissner-bosserhoff GmbH

Hauptstraße 4-6

D-58739 Wickede (Ruhr)

Tel.: +49(0)2377/784-0

Fax: +49(0)2377/784-163

E-Mail: info@wi-bo.de

www.wi-bo.de